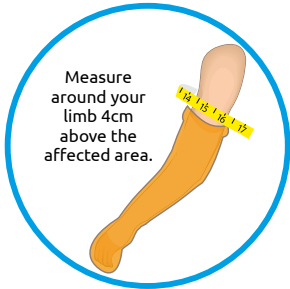




How to measure



Measure around your limb 4cm above the affected area.



Gently stretch open the seal. Slip your **buddy**® over your hand and pull up gently.



1



Pull the corners down slightly creating a smooth seal around your arm.

You are ready to shower!

For swimming and bathing: Pull the seal gently to release the air as you lower your limb into the water, repeat step 2.

You are now ready to get in!



3

- Avoid sharp objects whilst wearing/handling your **buddy**®
- Children should be supervised at all times. This product is not a toy
- Do **NOT** use bleach to clean - rinse and leave to dry naturally or pat dry with a towel
- To avoid snagging on plaster casts, please cover with a long sock or tubi grip

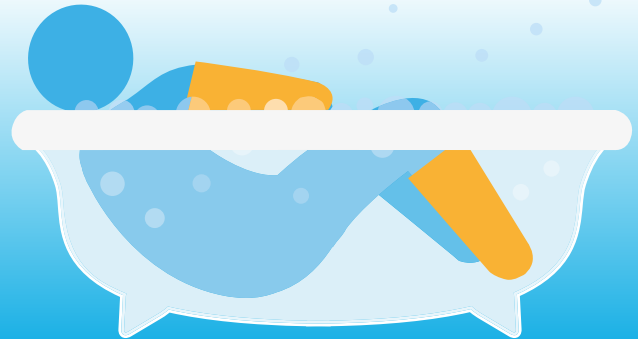


Waterproof arm DryLimb covers

- Wound dressings and plaster cast protectors



Shower Bath Swim



Re-usable



Latex-free



Soft & flexible